

**BHARATIYA VIDYA BHAVAN
BHAVAN'S MUNSHI VIDYASHRAM, TRIPUNITHURA**

22.03.2024

Dear Parent,

We place on record our appreciation and gratitude for the help and co-operation you have extended to us during the academic year 2023-2024. The school will remain closed for summer vacation from 23.03.2024 to 02.06.2024 (both days inclusive) for all classes except X and XII (2024-2025).

The school will reopen on Monday, 03.06.2024 for STD II to XII and for STD I on Wednesday, 05.06.2024. However, the fees can be paid online from 03.04.2024 (details are available on the school Website: www.bmvthiruvamkulam.ac.in)

WITHDRAWAL AND TRANSFER CERTIFICATE

Parents who wish to apply for TC may submit the application duly signed by both the parents to the school office by 25 March 2024. Transfer Certificates will be issued after the announcement of results on 30th March 2024. Parents submitting requests for Transfer Certificate after 30th April 2024 are required to pay one month's fees.

SCHOOL WORKING HOURS ON REOPENING

STD I - XII	:	08:30 a.m	–	03:05 p.m
LUNCH BREAK	:	12:30 p.m	–	01:00 p.m

SCHOOL UNIFORM

BOYS I - VIII Light Blue shirt with half sleeves and one pocket on the left side. Navy Blue shorts with side pockets and loops at the side for the school belt. Students up to Std VI should wear shorts only. Students from Std VII upwards who are over 150cm should wear trousers. The cloth badge should be stitched on the pocket of the shirt. Refer Diagram 2 of the picture sheet.

BOYS IX - XII Navy Blue trousers with loops at the side for the school belt. Light Blue shirt with half sleeves, one pocket on the left side and two Navy Blue broad stripes 1½ cms away from the front edge of the left collar. The cloth badge should be stitched on the pocket of the shirt. Refer Diagram 5 of the picture sheet.

NOTE **Low waist & tight trousers are not allowed. Only formal trousers with pleats are permitted. Boys of higher classes should come with shaven faces, hair cut short and neatly combed.**

GIRLS I - V Light blue shirt with half sleeves. Navy blue pleated pinafore of knee length with loops at the side for the school belt. (Pleats size 5 cms.) The cloth badge should be stitched on the left hand side just below the shoulder strap of the pinafore. Refer Diagram 1 of the picture sheet.

GIRLS VI - VIII Light blue shirt with half sleeves. Box pleated pinafore reaching 5 cms below the knee. The cloth badge should be stitched on the left hand side, just below the shoulder strap of the pinafore. Refer Diagram No. 3 of the picture sheet.

GIRLS IX - XI

Navy Blue Salwar, Light Blue Kameez with slit and Navy Blue waist coat. The sleeve of the Kameez should be of elbow length. The neck must be with shirt collar. A Navy Blue waist coat with 'v' neck should be worn above the Kameez. Cloth Badge should be stitched on the Left side of the waist coat. (ref. diagram 5)

GIRLS XII

Navy Blue Salwar, Light Blue Kameez with umbrella cutting (no slits) and Navy Blue Dupatta. The cloth badge should be stitched on the Duppatta as in diagram No. 4. The sleeve must be of elbow length. The neck of the Kameez must be round in shape 5.5cms in depth in front and at the back.

NOTE

Girls should come to school well groomed with neatly combed hair.

PICTURE SHEET

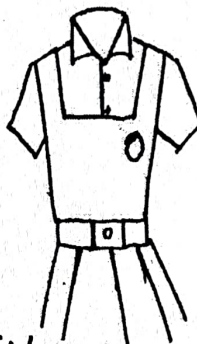
Diag. 1. Girls I-V



Diag. 2. Boys I-X



Diag. 3. Girls VI-VIII



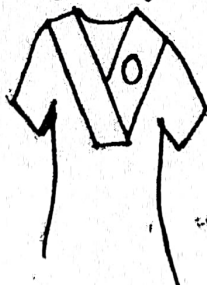
Diag. 5 Girls IX - XI



Diag. 5, Boys IX - XII



Diag. 4. Girls XII



BELT

Available in the School Office.

FOOTWEAR

STD I - XII

(BOYS)

Black school shoe and Navy blue socks. No other type of footwear will be permitted.

STD I - XII

(GIRLS)

Black school shoe (Buckle) and Navy blue socks. No other type of footwear will be permitted.

NOTE

During the rainy season, students are permitted to wear black sandak only.

Online purchase of Uniforms for all classes can be made from Bhavan's Mahila Vibhag by logging on to www.mahilavibhag.com.

Visit the website www.mahilavibhag.com and follow the given instructions:

Steps to order school uniform :

1. Click on main menu 'UNIFORM'.
2. Select the uniform required.
3. Select size from the size chart provided.
4. Select quantity.
5. Click Add to Cart .
6. Go to Cart and make Payment.

SCHOOL FEES:

The School fees should be paid online (Details are available on the school website: www.bmvthiruvamkulam.ac.in)

STD	Special Fee	Tuition fee per annum (Rs.)	Tuition fee per term (Rs.)
I-II	1900	32640	10880
III-IV	1900	37260	12420
V-VIII	1900	42870	14290
IX	3340	48690	16230
X	3340	50460	16820
XI-XII - Sc.	3420	58080	19360
XI-XII - Com./Hum.	2010	55125	18375

Other Fees	Per Annum(Rs.)	Per Term (Rs.)
Computer Science Fee optional for Std XI & XII	4095	1365
Home Science Fee optional for Std XI & XII	3780	1260
Artificial Intelligence Fee Optional for Std XI & XII	1200	400
Smart Class Fee for I – XII	1320	440

Amount to be remitted along with Ist term fee

Description	Amount (Rs.)
School Diary (STD I – XII)	50
Health Card (STD I – XII)	110
Student ID Card (STD I – XII)	50
Class Photo (STD I – XII)	50
House Activity - STD. I - XII	100
PTA Annual Subscription for STD. I - XII	300
Story book and worksheets for STD I & II	480
Story book for STD III, IV & V	80
Value Education Book for STD. I - VII	120
Value Education Book for STD VIII - X	130
Value Education Book for STD XI & XII	140
News Paper in Education (STD V – X)	250
Edu Sports for STD I – V	1050

Computer and Work Experience are compulsory from Std III to VIII.

SCHOOL TRANSPORT

Those who wish to avail themselves of the school transport facility should remit the fee on or before 25th April 2024. The details of the transport facility will be communicated through the School Whatsapp Group/ School Website.

TEXT BOOKS

Text Books will be available at respective school on 9th, 11th, 12th April 2024 from 9:00am to 2:00 pm

NOTE BOOKS

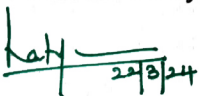
The school stationery store will function on all working days from 9:00am to 2:00pm. Note books and stationery items are available for all classes. You may buy the same on any convenient day from the school. The Notebooks can also be purchased online through: www.mahilavibhag.com

RATE OF NOTE BOOKS PER SET

Class	Rate	Class	Rate	Class	Rate
STD I	502 /-	STD. II	574 /-	STD. III	734 /-
STD. IV	704 /-	STD. V	704 /-	STD. VI	825 /-
STD.VII	861 /-	STD.VIII	867 /-	STD. IX	1045 /-
STD. X	1062 /-	STD. XI	1374 /-	STD. XII	1374 /-

We would like to take this opportunity to once again thank all our parents for their support and co-operation extended to us in all our endeavours.

Yours faithfully,



PRINCIPAL

